

1. Videoyu izleyelim ve video ile ilgili olan görseli işaretleyelim.

a)



b)



2. Videoyu tekrar izleyelim ve isimleri boşluklara dolduralım.

Jan

Emily

Sara

Ryan

John

- has beard and mustache.
- has a headscarf.
- has long curly hair.
- has long wavy hair.
- has short straight hair.

3. Videoyu tekrar izleyelim ve doğru kelimeleri yuvarlak içine alalım.

- Jan has **blue / brown / green** eyes.
- Sara has **blue / brown / green** eyes.
- Ryan has **blue / brown / green** eyes.
- Emily has **blue / brown / green** eyes.
- John has **blue / brown / green** eyes.

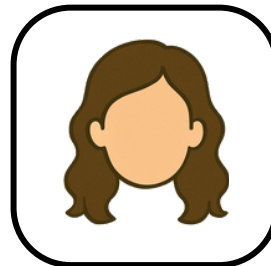
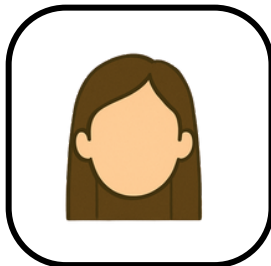
4. Aşağıdaki kelimeleri uygun boşluklara yerleştirelim.

straight

headscarf

curly

wavy



.....

.....

.....

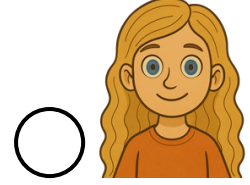
.....

5. Aşağıdaki görselleri uygun ifadelerle eşleştirelim. Bir ifade fazla.

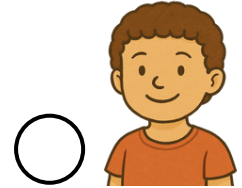
a. Sinan is a kid. He has short curly hair.



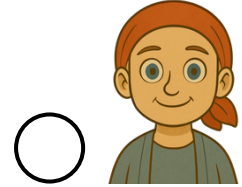
b. Hale has a headscarf



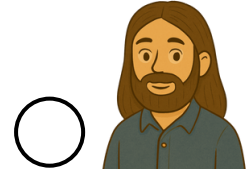
c. Metin has long straight hair and beard.



d. Aslı has long curly hair. She has sunglasses.



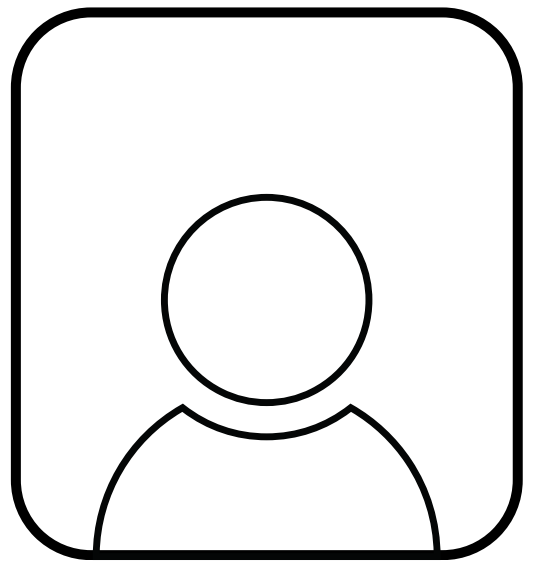
e. Kağan has mustache and glasses. He has short hair.



f. Pelin has long wavy hair.

5. Soldaki ifadelerden birisini seç. Ardından seçtiğin karakteri kutucuğa seçtiğin ifadedeki bilgilere göre çiz.

- Hakan has **short straight** hair.
He has **beard**.
He has **brown** eyes.
- Alptuğ has **short wavy** hair.
He has **mustache**.
He has **green** eyes.
- Gökçe has **long straight** hair.
She has **glasses**.
She has **blue** eyes.
- Yıldız has **long curly** hair.
She has a **hat**.
She has **brown** eyes.



.....